

MEETING FACILITIES FACT SHEET

All prices are valid until 31st December, 2019 and subject to change without prior notice

Size and Capacity of Meeting Rooms:

Venue	Size	Set up and Seating Capacity (Pax)				Rental Charge		
		Board Room	Class Room	Theatre	U-Shape	Hourly (Min. 2 hrs)	Half Day (4 Hours)	Full Day (8 Hours)
Braemar Room	27m ²	11	12	20	11	HK\$1,800	HK\$3,500	HK\$5,800
Horizon Rm (Harbour View)	34m ²	15	18	30	15	HK\$2,600	HK\$4,800	HK\$8,200

***Meeting Room Service Hour from 09:00 to 21:00**

Remarks : All prices are subject to 10% service charge

Coffee Break Package:

Package I	Package II	Package II
2 kinds of light refreshments HK\$140 per person	3 kinds of light refreshments HK\$170 per person	4 kinds of light refreshments HK\$200 per person

Remarks : *All prices are subject to 10% service charge

*Coffee break to be served in meeting room for 20 minutes with coffee, tea and refreshments

Optional Attraction

*Additional Refreshment to be charged at HK\$40 per person per item

*Additional Coffee/Tea to be charged at HK\$200 per samovar (1000ml.)

*Unlimited serving of Coffee and Tea throughout the meeting to be charge at HK\$100 per person per half day

Equipment Rental & Other Charges:

Equipment	Charges		Others	Charges
	Half Day	Full Day		
Portable LCD Projector	\$500 net	\$800net	Photocopying Service	\$5 / page
P/A system + 2 microphones	\$200 net	\$300net	Facsimile Service	\$8 / page

Remarks : The above prices are quoted on net price basis and all equipment are subject to availability.

Meeting Package

(Service Hours : 09:00a.m. - 19:00p.m.)

Half Day Meeting Package		Full Day Meeting Package
Without Lunch HK\$450.00 per person	With Lunch Buffet HK\$620.00 per person	Including Lunch Buffet HK\$790.00 per person
Package include: *Free use of meeting room for 4 hours within service hour *One Coffee Break with 2 kinds of light refreshments *Complimentary Wi-Fi access *Standard meeting amenities and equipment inclusive of : - Bottle Water & Mints - Writing pad with pen - 1 x Flipchart or 1 x Whiteboard		Package include: *Free use of meeting room for 8 hours within service hour *Two Coffee Breaks with 2 kinds of light refreshments *Complimentary Wi-Fi access *Standard meeting amenities and equipment inclusive of : - Bottle Water & Mints - Meeting Folder with Pen - 1 x Flipchart or 1 x Whiteboard

Remarks : *All prices are subject to 10% service charge

*Minimum attendance is required for different room uses:

- Baeremar Room at 8 persons / Horizon Room at 12 persons

*Rental surcharge will be applied for extension hour or usage of meeting rooms after 19:00pm

- Baemar Room HK\$800 per hour / Horizon Room HK\$1,000 per hour (subject to room available)

*Overtime charge with less than ONE hour will be charged as ONE hour

*Lunch Buffet to be served at Café (2/F) and service hours from 12:00noon to 14:30pm

*In case of any disputes, the hotel reserves the right of final decision

MEETING FACILITIES FACT SHEET

All prices are valid until 31st December, 2019 and subject to change without prior notice

Size and Capacity of Meeting Rooms:

Venue	Size	Set up and Seating Capacity (Pax)				Rental Charge		
		Board Room	Class Room	Theatre	U-Shape	Hourly (Min. 2 hrs)	Half Day (4 Hours)	Full Day (8 Hours)
Braemar Room	27m ²	11	12	20	11	HK\$1,800	HK\$3,500	HK\$5,800
Horizon Rm (Harbour View)	34m ²	15	18	30	15	HK\$2,600	HK\$4,800	HK\$8,200
*Meeting Room Service Hour from 09:00 to 21:00								

Remarks : All prices are subject to 10% service charge

Coffee Break Package:

Package I	Package II	Package II
2 kinds of light refreshments HK\$140 per person	3 kinds of light refreshments HK\$170 per person	4 kinds of light refreshments HK\$200 per person

Remarks : *All prices are subject to 10% service charge

*Coffee break to be served in meeting room for 20 minutes with coffee, tea and refreshments

Optional Attraction

*Additional Refreshment to be charged at HK\$40 per person per item

*Additional Coffee/Tea to be charged at HK\$200 per samovar (1000ml.)

*Unlimited serving of Coffee and Tea throughout the meeting to be charge at HK\$100 per person per half day

Equipment Rental & Other Charges:

Equipment	Charges		Others	Charges
	Half Day	Full Day		
Portable LCD Projector	\$500 net	\$800net	Photocopying Service	\$5 / page
P/A system + 2 microphones	\$200 net	\$300net	Facsimile Service	\$8 / page

Remarks : The above prices are quoted on net price basis and all equipment are subject to availability.

Meeting Package

(Service Hours : 09:00a.m. - 19:00p.m.)

Half Day Meeting Package		Full Day Meeting Package
Without Lunch HK\$450.00 per person	With Lunch Buffet HK\$620.00 per person	Including Lunch Buffet HK\$790.00 per person
Package include: *Free use of meeting room for 4 hours within service hour *One Coffee Break with 2 kinds of light refreshments *Complimentary Wi-Fi access *Standard meeting amenities and equipment inclusive of : - Bottle Water & Mints - Writing pad with pen - 1 x Flipchart or 1 x Whiteboard		Package include: *Free use of meeting room for 8 hours within service hour *Two Coffee Breaks with 2 kinds of light refreshments *Complimentary Wi-Fi access *Standard meeting amenities and equipment inclusive of : - Bottle Water & Mints - Meeting Folder with Pen - 1 x Flipchart or 1 x Whiteboard

Remarks : *All prices are subject to 10% service charge

*Minimum attendance is required for different room uses:

- Baeremar Room at 8 persons / Horizon Room at 12 persons

*Rental surcharge will be applied for extension hour or usage of meeting rooms after 19:00pm

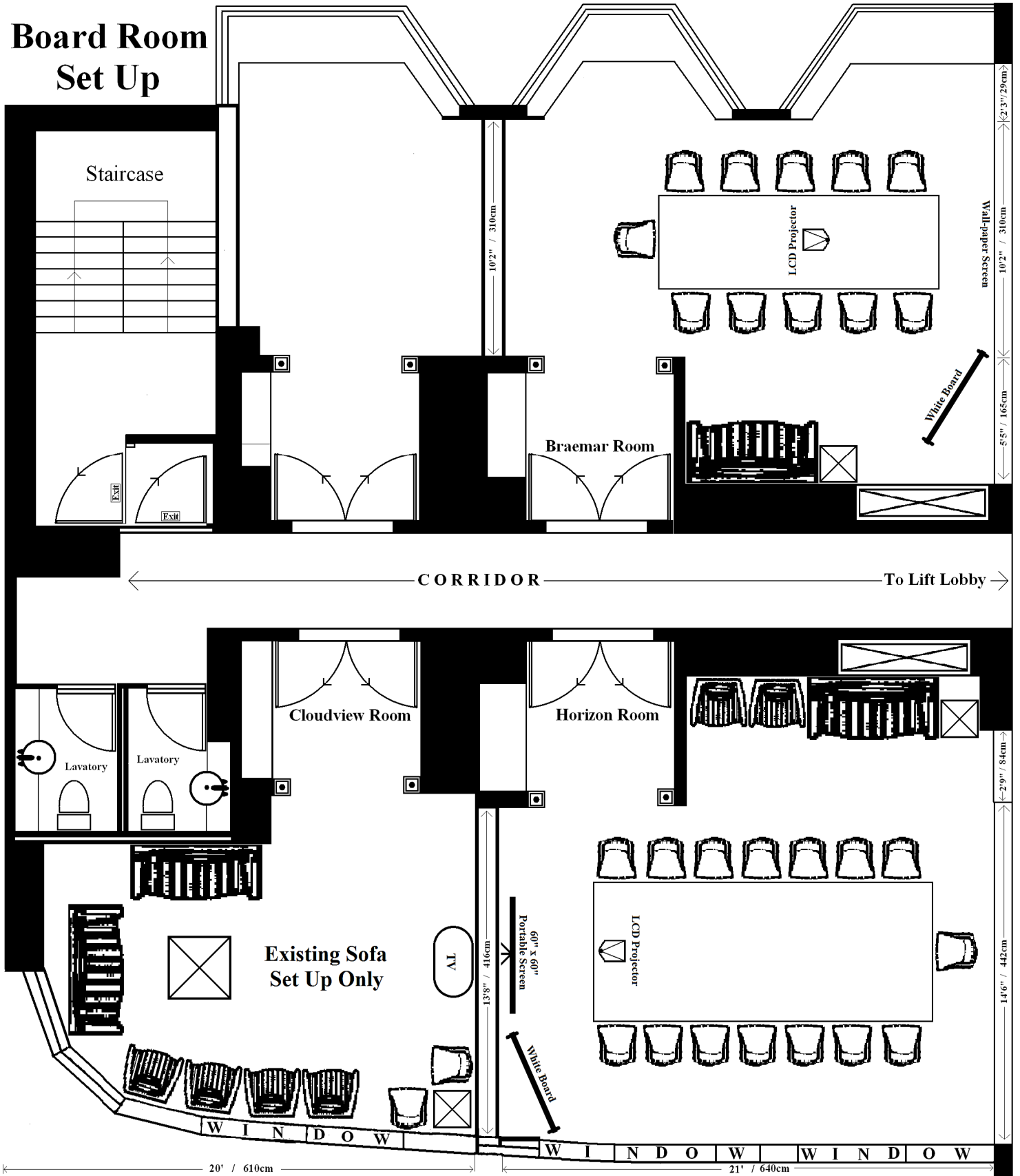
- Baemar Room HK\$800 per hour / Horizon Room HK\$1,000 per hour (subject to room available)

*Overtime charge with less than ONE hour will be charged as ONE hour

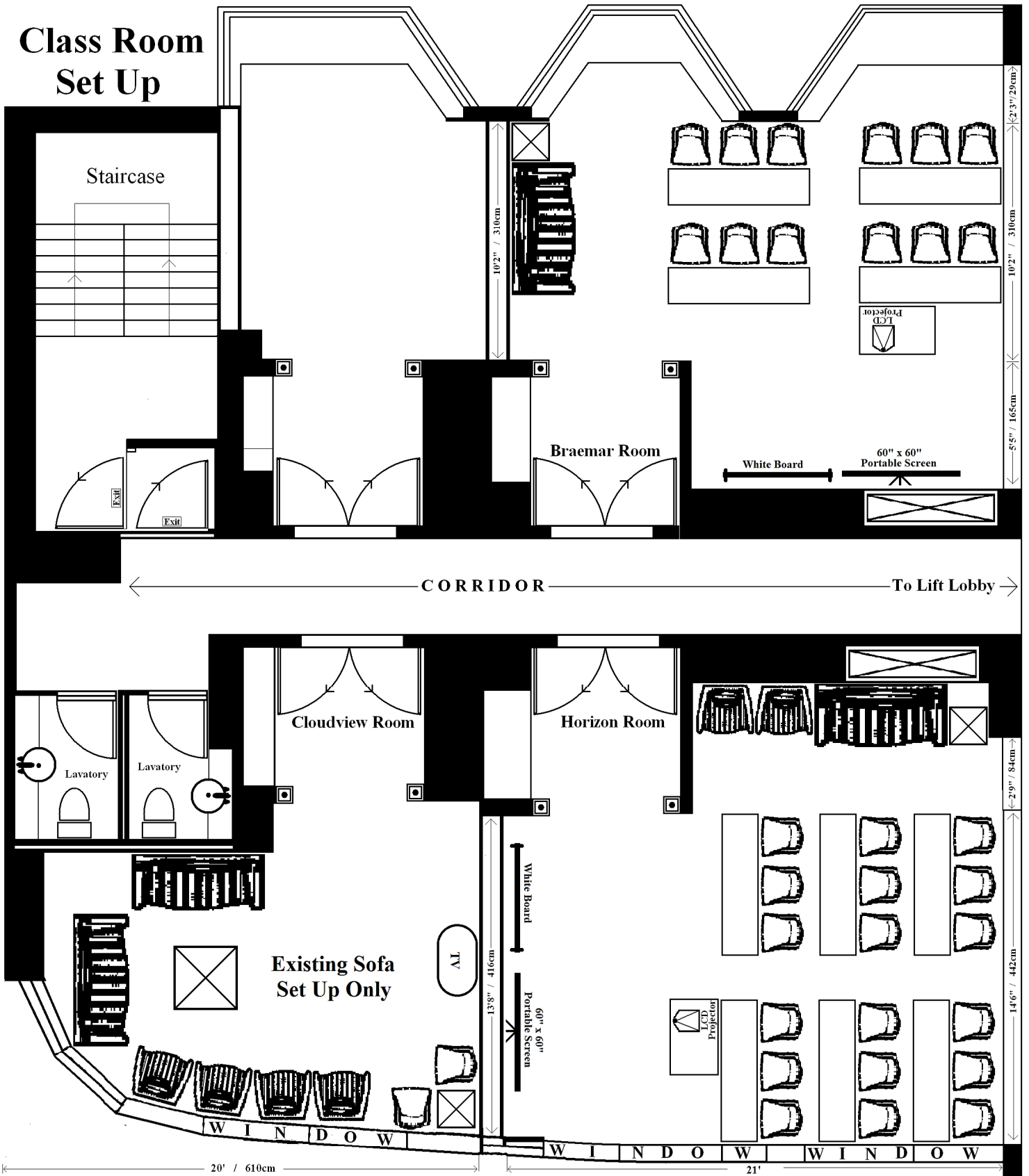
*Lunch Buffet to be served at Café (2/F) and service hours from 12:00noon to 14:30pm

*In case of any disputes, the hotel reserves the right of final decision

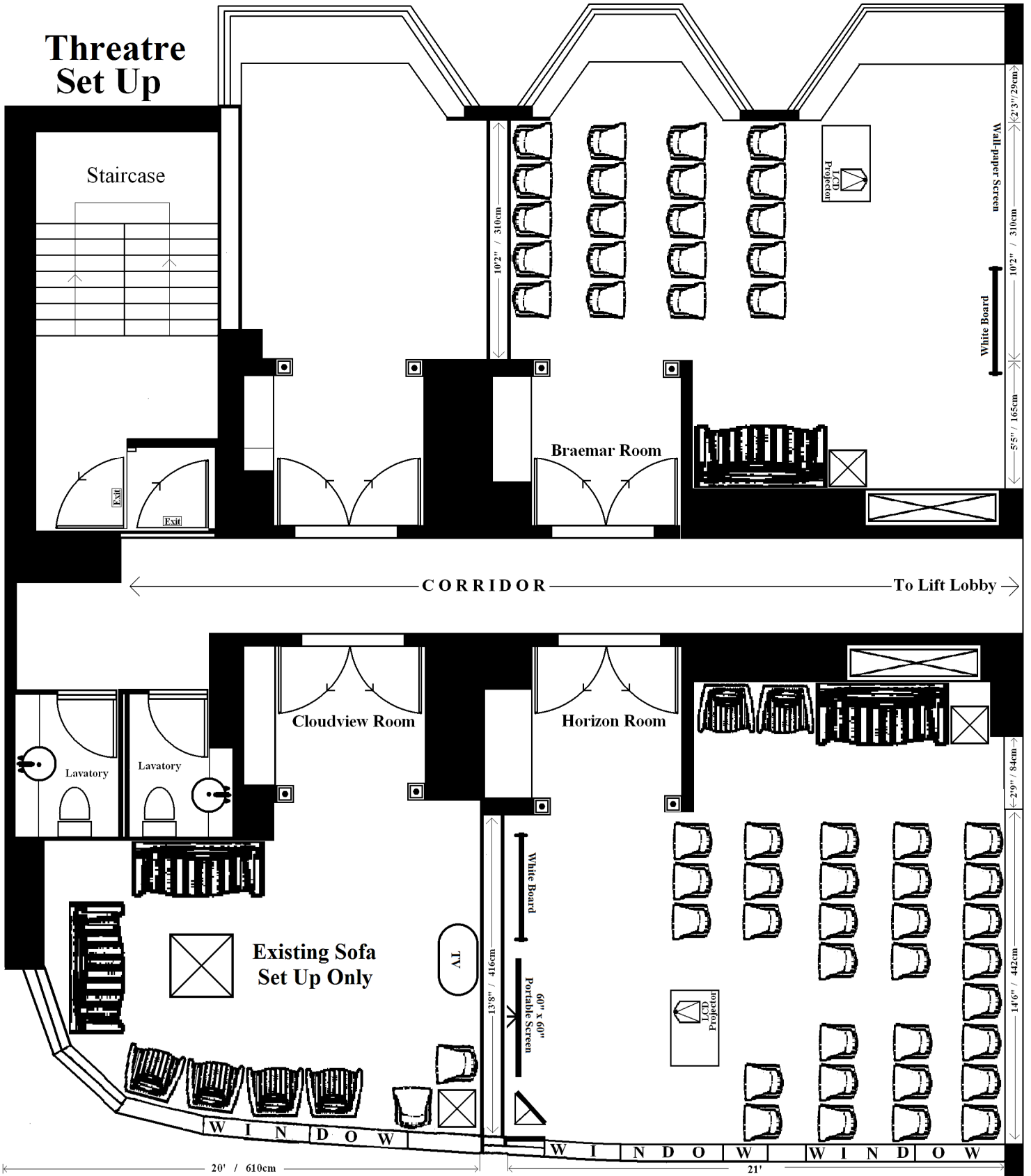
Board Room Set Up



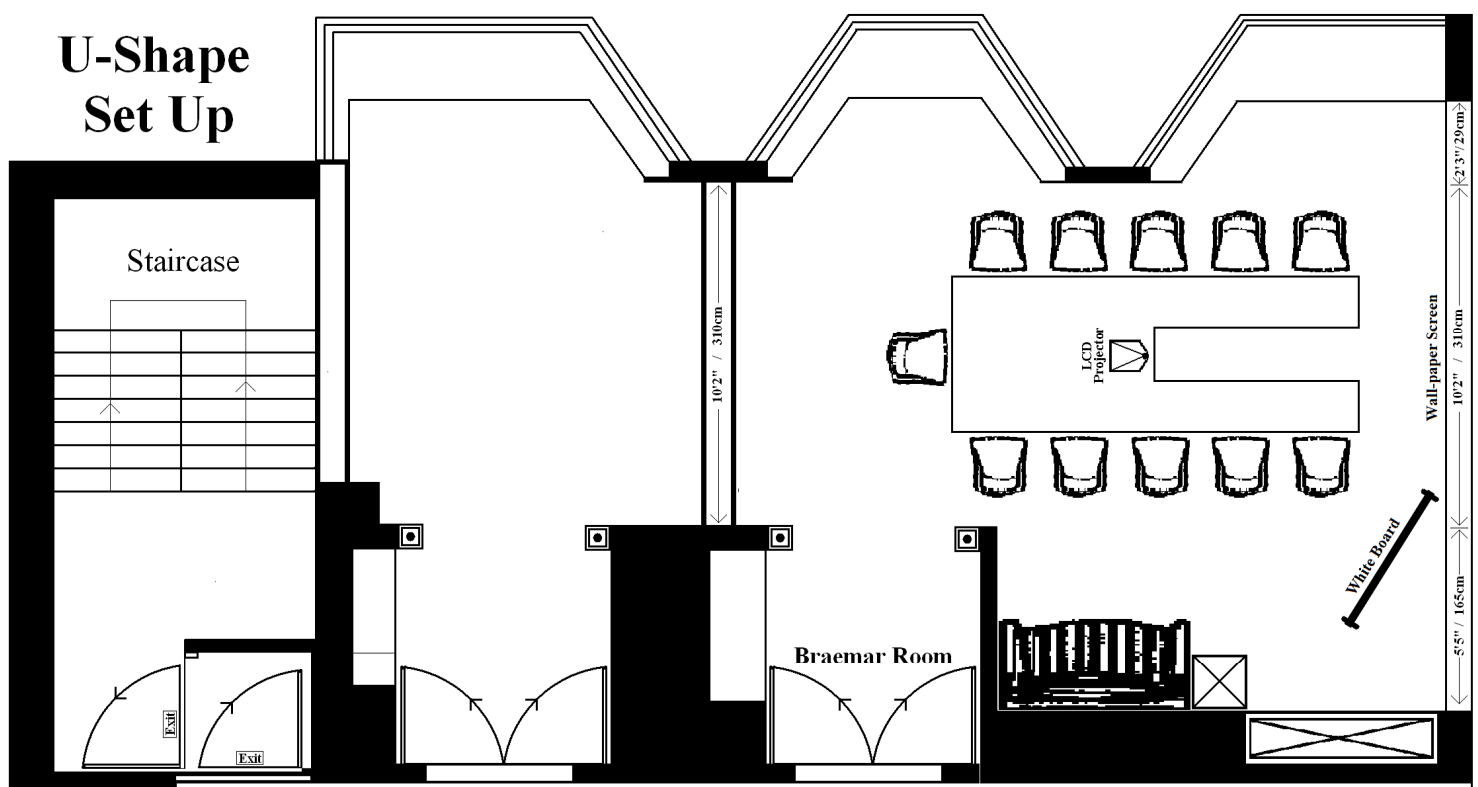
Class Room Set Up



Threatre Set Up



U-Shape Set Up



CORRIDOR

To Lift Lobby

